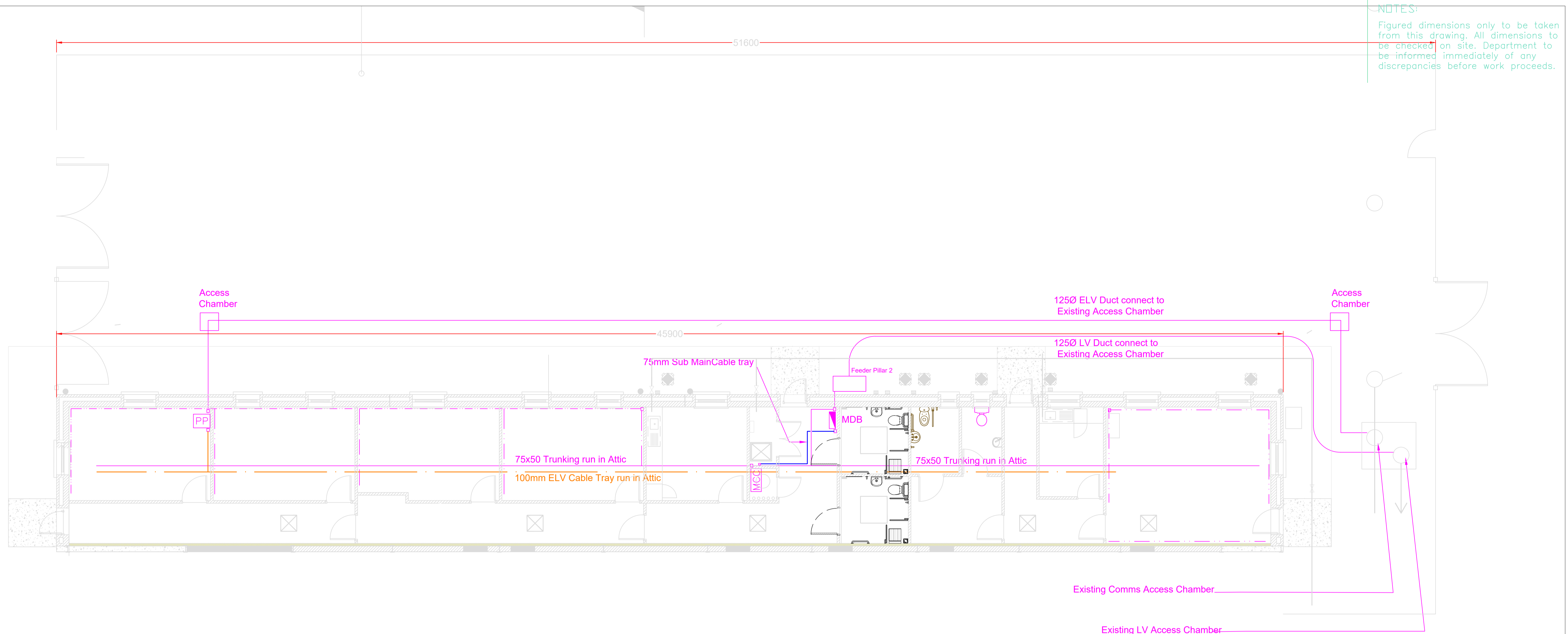
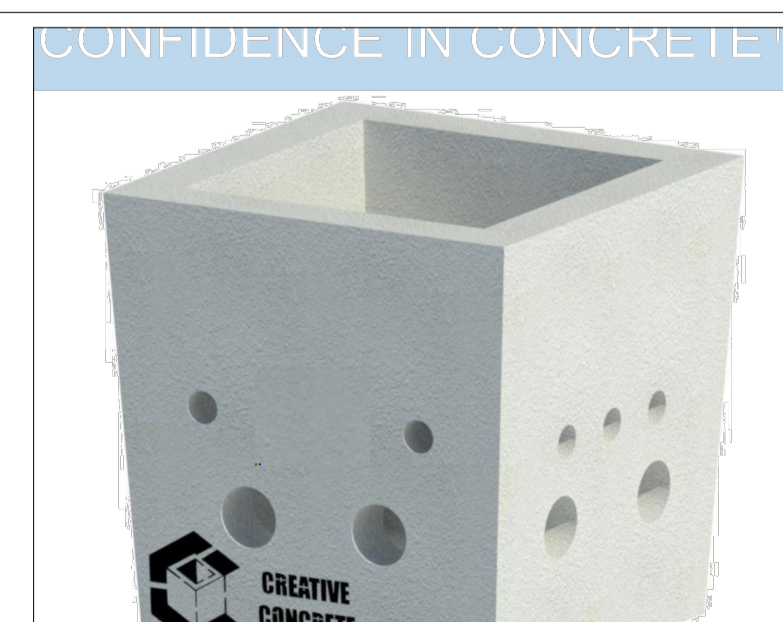
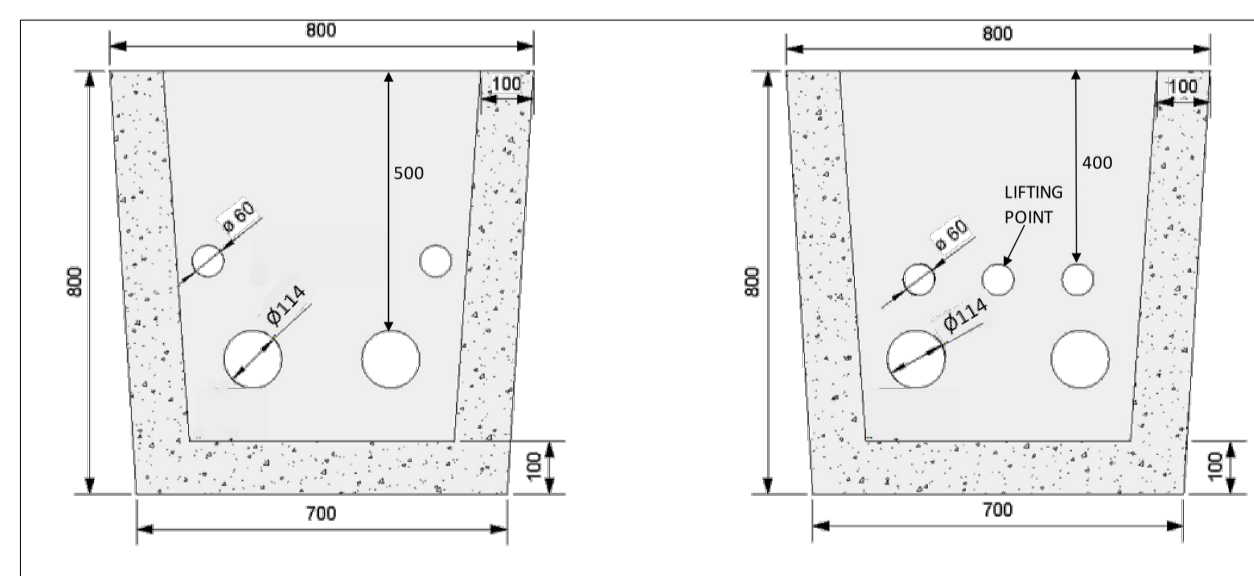


NOTES:
 Figured dimensions only to be taken from this drawing. All dimensions to be checked on site. Department to be informed immediately of any discrepancies before work proceeds.



LEGEND

- New Trunking run
- New Cable Tray IT
- New Cable Tray Sub Main
- - - - - New 3-Compartment Dado trunking



ACCESS CHAMBER DETAILS

NOTE:

Mains SWA Cables to be carried on Galvanised Steel mains cable tray above ceilings and vertically on risers


Data/ELV Cables to be carried on Galvanised Steel cable tray above ceilings and vertically on risers

Power and Lighting PVC Cables to be carried in Galvanised Steel Trunking with drops in Galvanised steel conduit

Primary Cable containment only is shown on Tender Drawings. Secondary Containment and Conduits required for the installation is not shown. Contractor to make allowance for same.

All Trunking/Cable Tray runs to be coordinated with Mechanical Contractor prior to First Fix.

Intumescent Fire barrier to be installed in all Trunking passing through Fire compartment.

REV	DESCRIPTION	BY	DATE
job title			
NEW BFW OFFICES AT GORMANSTON CAMP Co. MEATH			
drg.title			
PROPOSED SERVICES ELECTRICAL TRUNKING LAYOUT			
scale			
1:75			
drawn	checked	date	
DDD	C.Carey	May.2026	
 PLANNING & DESIGN OFFICE <small>Infrastructure & Utilities, 2 Engr. Group, Cathal Brugha Bks., Dublin 6</small>			
drg.no.			rev
PDE-B14-85- 404			